

CASE STUDY

M1 occlusion successfully treated with MIVI Q6™ Aspiration Catheter System

Courtesy of:
Federico Ballenilla MD
Hospital 12 de Octubre
Madrid, Spain

Physician Case Overview

The patient is a 66 year old female with several vascular risk factors; diabetic, hypertensive, and dislipemic, COPD and breast cancer (surgically treated successfully in 2015). Admitted to another facility's ER presenting with self-limited motor aphasia episodes.

Head CT shows no evidence of bleeding or hyper-acute ischemia. CT Angio shows left MCA occlusion at level of M1. CT Perfusion shows 100% penumbra. Patient is then transferred to the stroke facility. Upon arrival, patient shows complete aphasia with NIHSS of 10. Patient is assessed to be eligible for endovascular thrombectomy.

Catheter angiography confirms MCA occlusion at level of M1. The patient's left ICA is accessed with MIVI Super 90 guide catheter. Through the Super 90 catheter, a MIVI Q6 Aspiration Catheter is advanced to the occlusion site and aspiration is commenced. TICI 3 reperfusion is achieved in one pass.

Post-operative ICU evaluation showed a lack of any neurological deficit; patient is assessed as NIHSS 0.

Nine months later, patient remains asymptomatic with an mRS of 0.

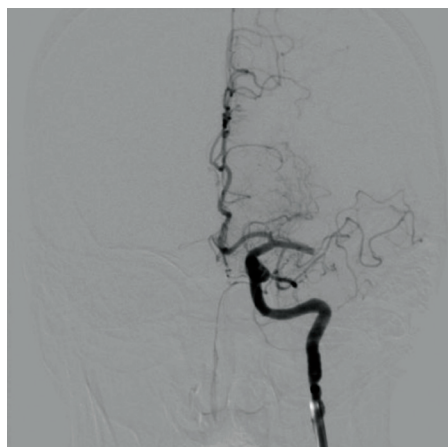


Fig. 1 Angiogram of LT M1 occlusion (AP)

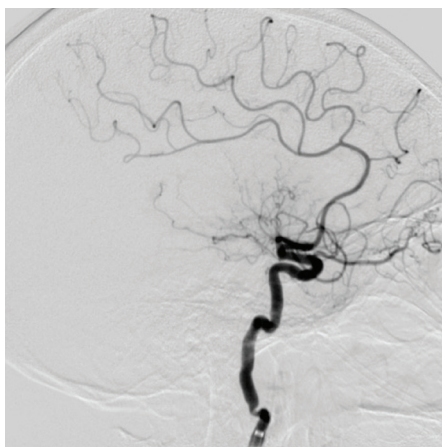


Fig. 2 Angiogram of LT M1 occlusion (Lateral)

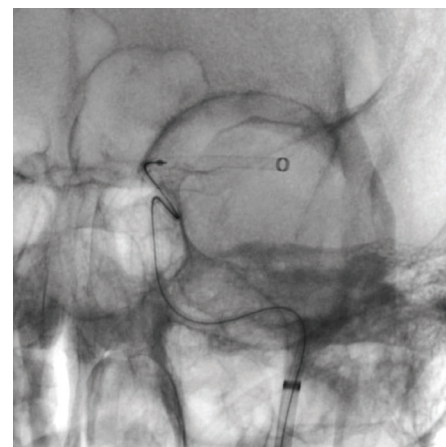


Fig. 3 MIVI Q6 Aspiration Catheter at occlusion site

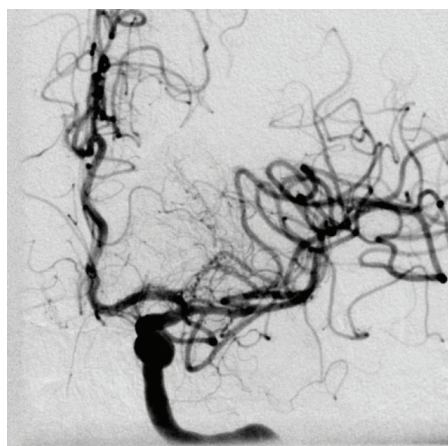


Fig. 4 Post-thrombectomy angio (AP): TICI 3

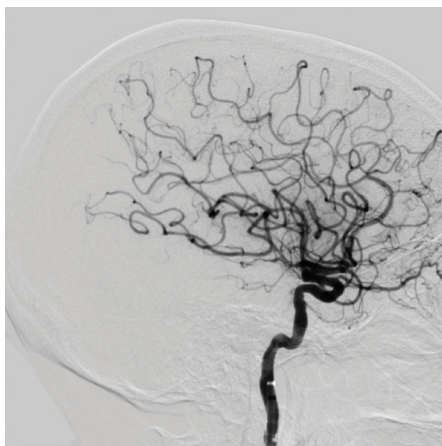


Fig. 5 Post-thrombectomy angio (Lateral): TICI 3

Indications for Use:

In the European Union, the Q Aspiration Catheter is indicated for the removal of fresh, soft emboli and thrombi in the peripheral and neurovascular systems. It may also be used as a diagnostic angiographic catheter

In the United States, the Q Catheter is indicated for use with compatible guide catheters in facilitating the insertion and guidance of microcatheters into a selected blood vessel in the peripheral, coronary and neurovascular systems. Refer to product labels and Instructions For Use for a complete list of contraindications, warnings and precautions.

Results from case studies are not necessarily predictive of results in other cases. Results in other cases may vary.